

# Anti-H\_Nectin4 hlgG1 Antibody(Enfortumab)

## Product information

GM-23369AB-10	10 µg
GM-23369AB-100	100 µg
GM-23369AB-1000	1 mg

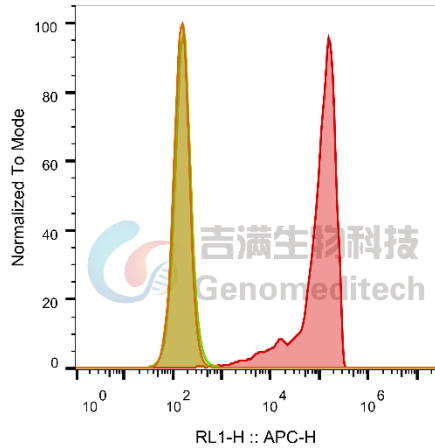
## Antibody Information

Species Reactivity	Human; Cynomolgus; Mouse
Clone	Enfortumab
Source/Isotype	Monoclonal human IgG1
Application	Flow cytometry; Bioactivity-ELISA
Specificity	Detects Nectin4
Gene	Nectin4
Other Names	EDSS1, LNIR, PRR4, PVRL4, nectin-4
Gene ID	81607(human), 102127936(cynomolgus), 71740(mouse)
Background	This gene encodes a member of the nectin family. The encoded protein contains two immunoglobulin-like (Ig-like) C2-type domains and one Ig-like V-type domain. It is involved in cell adhesion through trans-homophilic and -heterophilic interactions. It is a single-pass type I membrane protein. The soluble form is produced by proteolytic cleavage at the cell surface by the metalloproteinase ADAM17/TACE. The secreted form is found in both breast tumor cell lines and breast tumor patients. Mutations in this gene are the cause of ectodermal dysplasia-syndactyly syndrome type 1, an autosomal recessive disorder.
Storage	Store at 2-8°C short term (1-2 weeks).Store at ≤ -20°C long term. Avoid repeated freeze-thaw.
Formulation	Phosphate-buffered solution, pH 7.2.
Endotoxin	< 1 EU/mg, determined by LAL gel clotting assay

## Data Examples

Flow cytometry

The recommended usage range is 0.5-4  $\mu\text{g}$  per test. H\_NECTIN4 HEK-293 Cell Line (Catalog # GM-C19280) was stained with Anti-H\_Nectin4 hlgG1 Antibody (Catalog # GM-23369AB) or isotype control antibody, followed by anti-Human IgG APC-conjugated Secondary Antibody .

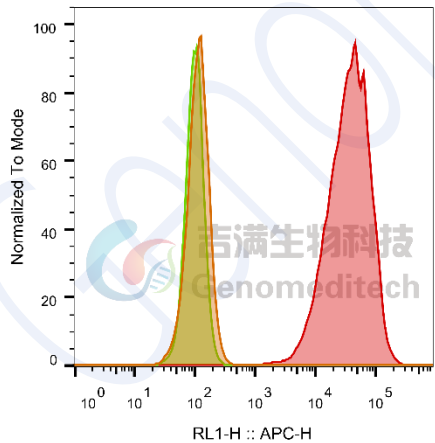


SampleID	Geometric Mean : RL1-H
HEK-293 anti-NECTIN4+APC-2nd Ab	152
HEK-293 H_NECTIN4 H_IgG+APC-2nd Ab	164
HEK-293 H_NECTIN4 anti-NECTIN4+APC-2nd Ab	86016

Fig. FACS

Flow cytometry

The recommended usage range is 0.5-4  $\mu\text{g}$  per test. Cynomolgus\_Nectin4 CHO-K1 Cell Line(Catalog # GM-C19258) was stained with Anti-H\_Nectin4 hlgG1 Antibody (Catalog # GM-23369AB) or isotype control antibody, followed by anti-Human IgG APC-conjugated Secondary Antibody .



SampleID	Geometric Mean : RL1-H
CHO-K1 anti-H_Nectin4+APC-2nd Ab	112
CHO-K1 Cyno_Nectin4 H_IgG+APC-2nd Ab	99.6
CHO-K1 Cyno_Nectin4 anti-H_Nectin4+APC-2nd Ab	33596

Fig. FACS

Bioactivity-ELISA

Human Nectin-4 Protein; His Tag (Catalog # GM-87586RP) was immobilized at 1 µg/ml (100 µL/well). Increasing concentrations of Anti-H\_Nectin4 hIgG1 Antibody (Enfortumab) (Catalog # GM-23369AB) were added.

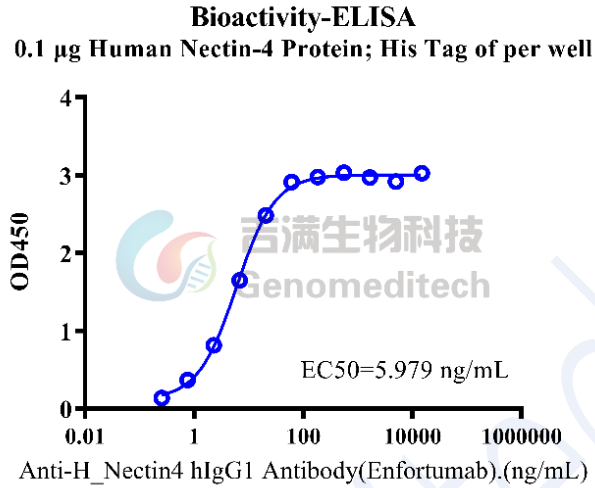


Fig. assay

Bioactivity-ELISA

Cynomolgus Nectin-4 Protein; His Tag (Catalog # GM-87588RP) was immobilized at 1 µg/ml (100 µL/well). Increasing concentrations of Anti-H\_Nectin4 hIgG1 Antibody (Enfortumab) (Catalog # GM-23369AB) were added.

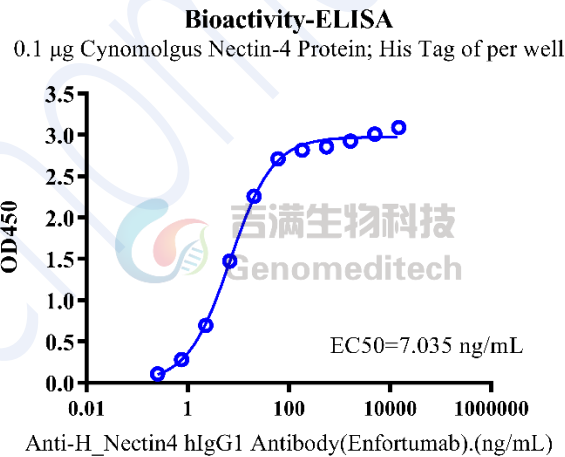


Fig. assay

Bioactivity-ELISA

Biotinylated Mouse Nectin-4 Protein; His-Avi Tag (Catalog # GM-87591RP) was immobilized at 1 µg/ml (100 µL/well) on streptavidin pre-coated. Increasing concentrations of Anti-H\_Nectin4 hlgG1 Antibody (Enfortumab) (Catalog # GM-23369AB) were added.

**Bioactivity-ELISA**

0.1 µg Biotinylated Mouse Nectin-4 Protein; His-Avi Tag of per well

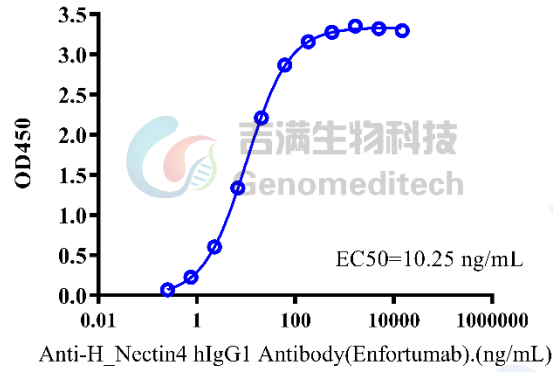


Fig. assay